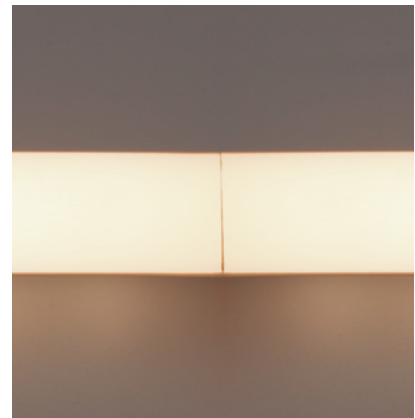
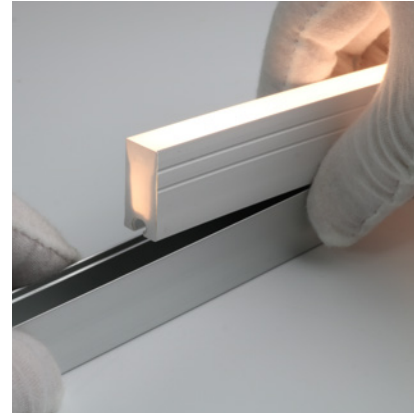


Flexible

# KURV-Y Fixture Guide

# KKDÖ

Indoor/Outdoor | Recessed | Output up to 384 lm/m (117 lm/ft)

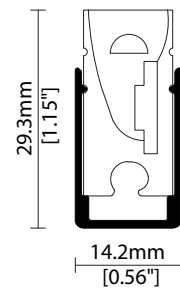


## Key applications

- ✓ Architectural detail
- ✓ Bathrooms
- ✓ Building façades
- ✓ Cabinet/Furniture
- ✓ Hand rail
- ✓ Interior/Exterior
- ✓ Mirror back lighting
- ✓ Orientation lighting
- ✓ Under bench
- ✓ Window Reveal

## Key features

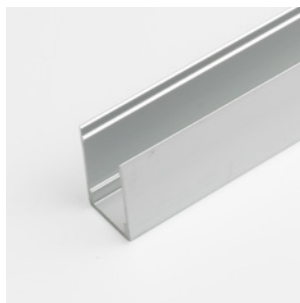
- ✓ Custom lengths
- ✓ Diffusion: Homogenous
- ✓ Direct view
- ✓ Extensive CCT range
- ✓ Flexible
- ✓ IP67
- ✓ Output mid
- ✓ Thin light line
- ✓ Trimless



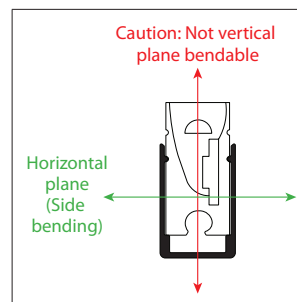
## MOUNTING METHODS



KKCP-18 Mounting clip



KKCH-02 Mounting channel



Flexible

# KURV-Y

## Specification sheet



|                        |  |
|------------------------|--|
| <b>Dimensions</b>      | H25/W12/L254-4004mm (H0.98/W0.47/L10-157.6in)  |
| <b>PCB Cut-point</b>   | 62.5mm (2.46in)  |
| <b>LED Pitch</b>       | 10.4mm - 96LED/m (0.41in - 29LED/ft)   |
| <b>Chip</b>            | <b>k-line</b>  |
| <b>Cover/Optics</b>    | Diffused (120°)  |
| <b>Colours</b>         | <b>k-line:</b> 2300K/2500K/2700K/3000K/3500K/4200K   |
| <b>LED binning</b>     | <b>k-line:</b> 3-step MacAdam ellipse  |
| <b>CRI</b>             | ≥ 90   |
| <b>Lifetime</b>        | 50,000 hours @ 25°C (50,000 hours @ 77°F)  |
| <b>Operating temp</b>  | T <sub>a</sub> = -25 to 40°C (T <sub>c</sub> max = 65°C)<br>T <sub>a</sub> = -13 to 104°F (T <sub>c</sub> max = 149°F) |
| <b>IP Rating</b>       | IP67   |
| <b>Finish</b>          | White  |
| <b>Mounting</b>        | Surface Mounting via concealed clip or mounting channel  |
| <b>Min bend radius</b> | 125mm (4.92in)   |
| <b>Power feed</b>      | Male/female connectors   |
| <b>Control</b>         | 0-10V/1-10V/DMX/DALI   |



### LED Grading Key

#### Base Grade

**k-line**  
3-step commercial range  
Energy Star CCTs

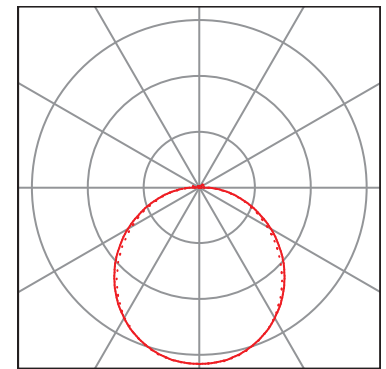
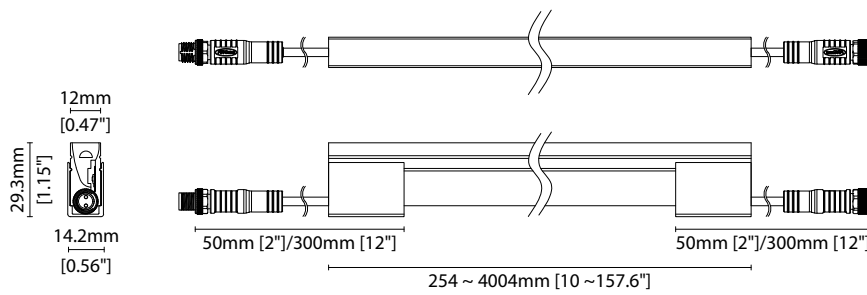
|                          |                       |                       |
|--------------------------|-----------------------|-----------------------|
| <b>Power consumption</b> | <b>Supply voltage</b> | <b>Supply current</b> |
| 18W/m (5.49W/ft)         | 24V DC                | 0.75A/m (0.22A/m)     |

### Performance Data (3000K)

|               |    |    |    |    |    |    |    |    |    |     |     |     |     |     |
|---------------|----|----|----|----|----|----|----|----|----|-----|-----|-----|-----|-----|
|               | R1 | R2 | R3 | R4 | R5 | R6 | R7 | R8 | R9 | R10 | R11 | R12 | R13 | R14 |
| <b>k-line</b> | 96 | 98 | 93 | 93 | 96 | 93 | 87 | 79 | 58 | 96  | 96  | 81  | 98  | 97  |

### Diffused Cover

|               |                                   |            |           |           |           |
|---------------|-----------------------------------|------------|-----------|-----------|-----------|
|               |                                   | <b>CRI</b> | <b>R9</b> | <b>Rf</b> | <b>Rg</b> |
| <b>k-line</b> | 384 lm/m (117 lm/ft)<br>21.3 lm/W | 92         | 58        | 88        | 95        |



Diffused  
— C0 / C180      cd / 1000 lm      - - - C90 / C270

Data derived from independent UKAS / IESNA LM-79-08 accredited testing of production samples.

### FIXTURE

| Model  | Cover <sup>1</sup> | Grade <sup>2</sup> | LED | Colour (CCT) | Length Availability <sup>3</sup> | IP   | Cable Length                    | Power Feed <sup>4</sup>                     | Input                           |      |    |                    |                      |   |        |   |
|--------|--------------------|--------------------|-----|--------------|----------------------------------|--|---------------------------------|---|---------------------------------|------|----|--------------------|----------------------|---|--------|---|
| KURV-Y | KY                 | Diffused c         | k   | FX18         | R918                             | 2300K  | 23                              | m   | 254-4004mm<br>62.5mm increments | IP67 | 67 | 50mm/1.97"<br>0050 | 300mm/11.81"<br>0300 | Single ø3.5mm sheath IP67 connector<br>S67E | DC 24V | g |
|        |                    |                    |     | 2500K        | 25                               | i  | 10-157.6in<br>2.46in increments | Double ø3.5mm sheath IP67 connector<br>D67E |                                 |      |    |                    |                      |   |        |   |
|        |                    |                    |     | 2700K        | 27                               |  |                                 |   |                                 |      |    |                    |                      |   |        |   |
|        |                    |                    |     | 3000K        | 30                               |  |                                 |   |                                 |      |    |                    |                      |   |        |   |
|        |                    |                    |     | 3500K        | 35                               |  |                                 |   |                                 |      |    |                    |                      |   |        |   |
|        |                    |                    |     | 4200K        | 42                               | (Specify length code<br>OR total run length) |                                 |   |                                 |      |    |                    |                      |   |        |   |

<sup>1</sup> Refer to **Cover/Lens Options** on **Options** pages

<sup>2</sup> Refer to **LED Grading Key** on **Specification sheet** page

<sup>3</sup> Refer to **Length Availability List** or enter total run length instead of length code

<sup>4</sup> Refer to **Power Feed Options** on **Options** pages

### Code Example:

|        |   |          |   |   |   |      |   |       |   |   |   |        |   |      |   |              |   |                                     |   |        |
|--------|---|----------|---|---|---|------|---|-------|---|---|---|--------|---|------|---|--------------|---|-------------------------------------|---|--------|
| KY     | - | c        | - | k | - | R918 | - | 27    | - | m | - | 1004   | - | 67   | - | 0300         | - | D67E                                | - | g      |
| KURV-Y |   | Diffused |   | k |   | FX18 |   | 2700K |   |   |   | 1004mm |   | IP67 |   | 300mm/11.81" |   | Double ø3.5mm sheath IP67 connector |   | DC 24V |

### ACCESSORIES

#### Mounting Accessories

|         |                  |
|---------|------------------|
| KKCP-18 | Mounting clip    |
| KKCH-02 | Mounting channel |

\* Refer to **Mounting accessories** on **Accessories** pages

#### Connection Accessories

|              |   |
|--------------|---|
| CN67-2P-KVM1 | IP67 2 Pin male lead connector<br>1000mm/39.37"   |
| CN67-2P-KVF1 | IP67 2 Pin female lead connector<br>1000mm/39.37" |

\* Refer to **Power feed** on **Accessories** pages

#### PSU/Driver

0-10V/1-10V/DALI/DMX

\* Refer to **Driver/PSU Options** page for details or provide requirement and KKDC to offer the suitable option

### LED ENGINE VARIANTS (LED STRIP TYPE)

| Luminaire     | LED  | Lumen/m                                       | Lumen/ft                                   | W/m  | W/ft | Spec Doc      | Length                   | Increment       |
|---------------|------|---|--|------|------|---------------|--------------------------|-----------------|
| KURV-Y        | R918 | 384   | 117  | 18   | 5.49 | KURV-Y White  | 254-4004mm (10-157.6in)  | 62.5mm (2.46in) |
| KURV-Y LEDmix | 909  | 480   | 146  | 15.6 | 4.75 | KURV-Y LEDmix | 254-3004mm (10-118.28in) | 83.3mm (3.28in) |
| KURV-Y RGB    | 907  | Red: 45<br>Green: 133<br>Blue: 14<br>RGB: 180 | Red: 14<br>Green: 41<br>Blue: 4<br>RGB: 55 | 15.6 | 4.75 | KURV-Y RGB    | 254-2004mm (10-78.90in)  | 83.3mm (3.28in) |

\* Performance data: k-line, 3000K, diffused

Flexible

# KURV-Y

## Length Availability List



| Length Code |              | Fixture Length <sup>1</sup> |              | LED Strip <sup>2</sup> |              | End Cap Dimension |              | Wattage (W) | Output (lm)          |
|-------------|--------------|-----------------------------|--------------|------------------------|--------------|-------------------|--------------|-------------|----------------------|
| Metric      | Imperial(US) | Metric                      | Imperial(US) | Metric                 | Imperial(US) | Metric            | Imperial(US) |             | 3000K<br>(Test Data) |
| m0254       | i0010        | 254mm                       | 10.00in      | 250mm                  | 9.84in       | N/A               | N/A          | 4.50        | 96                   |
| m0317       | i0012        | 317mm                       | 12.46in      | 313mm                  | 12.30in      | N/A               | N/A          | 5.63        | 120                  |
| m0379       | i0015        | 379mm                       | 14.92in      | 375mm                  | 14.76in      | N/A               | N/A          | 6.75        | 144                  |
| m0442       | i0017        | 442mm                       | 17.38in      | 438mm                  | 17.22in      | N/A               | N/A          | 7.88        | 168                  |
| m0504       | i0020        | 504mm                       | 19.84in      | 500mm                  | 19.69in      | N/A               | N/A          | 9.00        | 192                  |
| m0567       | i0022        | 567mm                       | 22.30in      | 563mm                  | 22.15in      | N/A               | N/A          | 10.13       | 216                  |
| m0629       | i0025        | 629mm                       | 24.76in      | 625mm                  | 24.61in      | N/A               | N/A          | 11.25       | 240                  |
| m0692       | i0027        | 692mm                       | 27.22in      | 688mm                  | 27.07in      | N/A               | N/A          | 12.38       | 264                  |
| m0754       | i0030        | 754mm                       | 29.69in      | 750mm                  | 29.53in      | N/A               | N/A          | 13.50       | 288                  |
| m0817       | i0032        | 817mm                       | 32.15in      | 813mm                  | 31.99in      | N/A               | N/A          | 14.63       | 312                  |
| m0879       | i0035        | 879mm                       | 34.61in      | 875mm                  | 34.45in      | N/A               | N/A          | 15.75       | 335                  |
| m0942       | i0037        | 942mm                       | 37.07in      | 938mm                  | 36.91in      | N/A               | N/A          | 16.88       | 359                  |
| m1004       | i0040        | 1004mm                      | 39.53in      | 1000mm                 | 39.37in      | N/A               | N/A          | 18.00       | 383                  |
| m1067       | i0042        | 1067mm                      | 41.99in      | 1063mm                 | 41.83in      | N/A               | N/A          | 19.13       | 407                  |
| m1129       | i0044        | 1129mm                      | 44.45in      | 1125mm                 | 44.29in      | N/A               | N/A          | 20.25       | 431                  |
| m1192       | i0047        | 1192mm                      | 46.91in      | 1188mm                 | 46.75in      | N/A               | N/A          | 21.38       | 455                  |
| m1254       | i0049        | 1254mm                      | 49.37in      | 1250mm                 | 49.21in      | N/A               | N/A          | 22.50       | 479                  |
| m1317       | i0052        | 1317mm                      | 51.83in      | 1313mm                 | 51.67in      | N/A               | N/A          | 23.63       | 503                  |
| m1379       | i0054        | 1379mm                      | 54.29in      | 1375mm                 | 54.13in      | N/A               | N/A          | 24.75       | 527                  |
| m1442       | i0057        | 1442mm                      | 56.75in      | 1438mm                 | 56.59in      | N/A               | N/A          | 25.88       | 551                  |
| m1504       | i0059        | 1504mm                      | 59.21in      | 1500mm                 | 59.06in      | N/A               | N/A          | 27.00       | 575                  |
| m1567       | i0062        | 1567mm                      | 61.67in      | 1563mm                 | 61.52in      | N/A               | N/A          | 28.13       | 599                  |
| m1629       | i0064        | 1629mm                      | 64.13in      | 1625mm                 | 63.98in      | N/A               | N/A          | 29.25       | 623                  |
| m1692       | i0067        | 1692mm                      | 66.59in      | 1688mm                 | 66.44in      | N/A               | N/A          | 30.38       | 647                  |
| m1754       | i0069        | 1754mm                      | 69.06in      | 1750mm                 | 68.90in      | N/A               | N/A          | 31.50       | 671                  |
| m1817       | i0072        | 1817mm                      | 71.52in      | 1813mm                 | 71.36in      | N/A               | N/A          | 32.63       | 695                  |
| m1879       | i0074        | 1879mm                      | 73.98in      | 1875mm                 | 73.82in      | N/A               | N/A          | 33.75       | 719                  |
| m1942       | i0076        | 1942mm                      | 76.44in      | 1938mm                 | 76.28in      | N/A               | N/A          | 34.88       | 743                  |
| m2004       | i0079        | 2004mm                      | 78.90in      | 2000mm                 | 78.74in      | N/A               | N/A          | 36.00       | 767                  |
| m2067       | i0081        | 2067mm                      | 81.36in      | 2063mm                 | 81.20in      | N/A               | N/A          | 37.13       | 791                  |
| m2129       | i0084        | 2129mm                      | 83.82in      | 2125mm                 | 83.66in      | N/A               | N/A          | 38.25       | 815                  |
| m2192       | i0086        | 2192mm                      | 86.28in      | 2188mm                 | 86.12in      | N/A               | N/A          | 39.38       | 839                  |
| m2254       | i0089        | 2254mm                      | 88.74in      | 2250mm                 | 88.58in      | N/A               | N/A          | 40.50       | 863                  |
| m2317       | i0091        | 2317mm                      | 91.20in      | 2313mm                 | 91.04in      | N/A               | N/A          | 41.63       | 887                  |
| m2379       | i0094        | 2379mm                      | 93.66in      | 2375mm                 | 93.50in      | N/A               | N/A          | 42.75       | 911                  |
| m2442       | i0096        | 2442mm                      | 96.12in      | 2438mm                 | 95.96in      | N/A               | N/A          | 43.88       | 935                  |
| m2504       | i0099        | 2504mm                      | 98.58in      | 2500mm                 | 98.43in      | N/A               | N/A          | 45.00       | 959                  |
| m2567       | i0101        | 2567mm                      | 101.04in     | 2563mm                 | 100.89in     | N/A               | N/A          | 46.13       | 982                  |
| m2629       | i0104        | 2629mm                      | 103.50in     | 2625mm                 | 103.35in     | N/A               | N/A          | 47.25       | 1006                 |
| m2692       | i0106        | 2692mm                      | 105.96in     | 2688mm                 | 105.81in     | N/A               | N/A          | 48.38       | 1030                 |
| m2754       | i0108        | 2754mm                      | 108.43in     | 2750mm                 | 108.27in     | N/A               | N/A          | 49.50       | 1054                 |
| m2817       | i0111        | 2817mm                      | 110.89in     | 2813mm                 | 110.73in     | N/A               | N/A          | 50.63       | 1078                 |
| m2879       | i0113        | 2879mm                      | 113.35in     | 2875mm                 | 113.19in     | N/A               | N/A          | 51.75       | 1102                 |

Flexible

# KURV-Y

## Length Availability List



| Length Code |              | Fixture Length <sup>1</sup> |              | LED Strip <sup>2</sup> |              | End Cap Dimension |              | Wattage (W) | Output (lm)          |
|-------------|--------------|-----------------------------|--------------|------------------------|--------------|-------------------|--------------|-------------|----------------------|
| Metric      | Imperial(US) | Metric                      | Imperial(US) | Metric                 | Imperial(US) | Metric            | Imperial(US) |             | 3000K<br>(Test Data) |
| m2942       | i0116        | 2942mm                      | 115.81in     | 2938mm                 | 115.65in     | N/A               | N/A          | 52.88       | 1126                 |
| m3004       | i0118        | 3004mm                      | 118.27in     | 3000mm                 | 118.11in     | N/A               | N/A          | 54.00       | 1150                 |
| m3067       | i0121        | 3067mm                      | 120.73in     | 3063mm                 | 120.57in     | N/A               | N/A          | 55.13       | 1174                 |
| m3129       | i0123        | 3129mm                      | 123.19in     | 3125mm                 | 123.03in     | N/A               | N/A          | 56.25       | 1198                 |
| m3192       | i0126        | 3192mm                      | 125.65in     | 3188mm                 | 125.49in     | N/A               | N/A          | 57.38       | 1222                 |
| m3254       | i0128        | 3254mm                      | 128.11in     | 3250mm                 | 127.95in     | N/A               | N/A          | 58.50       | 1246                 |
| m3317       | i0131        | 3317mm                      | 130.57in     | 3313mm                 | 130.41in     | N/A               | N/A          | 59.63       | 1270                 |
| m3379       | i0133        | 3379mm                      | 133.03in     | 3375mm                 | 132.87in     | N/A               | N/A          | 60.75       | 1294                 |
| m3442       | i0135        | 3442mm                      | 135.49in     | 3438mm                 | 135.33in     | N/A               | N/A          | 61.88       | 1318                 |
| m3504       | i0138        | 3504mm                      | 137.95in     | 3500mm                 | 137.80in     | N/A               | N/A          | 63.00       | 1342                 |
| m3567       | i0140        | 3567mm                      | 140.41in     | 3563mm                 | 140.26in     | N/A               | N/A          | 64.13       | 1366                 |
| m3629       | i0143        | 3629mm                      | 142.87in     | 3625mm                 | 142.72in     | N/A               | N/A          | 65.25       | 1390                 |
| m3692       | i0145        | 3692mm                      | 145.33in     | 3688mm                 | 145.18in     | N/A               | N/A          | 66.38       | 1414                 |
| m3754       | i0148        | 3754mm                      | 147.80in     | 3750mm                 | 147.64in     | N/A               | N/A          | 67.50       | 1438                 |
| m3817       | i0150        | 3817mm                      | 150.26in     | 3813mm                 | 150.10in     | N/A               | N/A          | 68.63       | 1462                 |
| m3879       | i0153        | 3879mm                      | 152.72in     | 3875mm                 | 152.56in     | N/A               | N/A          | 69.75       | 1486                 |
| m3942       | i0155        | 3942mm                      | 155.18in     | 3938mm                 | 155.02in     | N/A               | N/A          | 70.88       | 1510                 |
| m4004       | i0158        | 4004mm                      | 157.64in     | 4000mm                 | 157.48in     | N/A               | N/A          | 72.00       | 1534                 |

<sup>1</sup> Actual total overall length of light fixture (LED strip + end caps + void/wire hole)

<sup>2</sup> Actual length of PCB strip

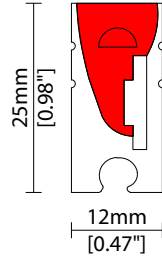


# KURV-Y Options



## COVER/LENS OPTIONS

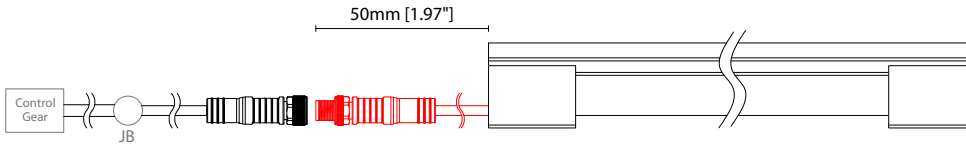
\* Options are an integral part of the fixture ordering codes. Please refer to **Code Table** pages.



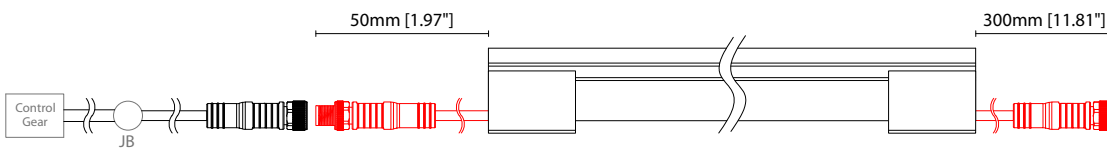
**C** Diffused Cover  
W12/H25mm (W0.47/H0.98")

### POWER FEED OPTIONS

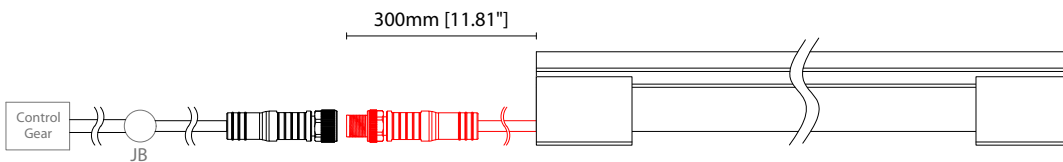
0050 S67E 50mm (1.97") Single ø3.5mm sheath IP67 male connector



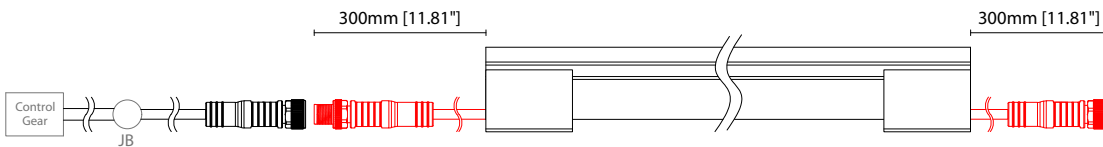
0050 D67E 50mm (1.97") Double ø3.5mm sheath IP67 connector



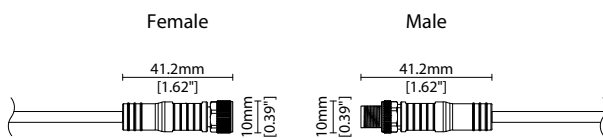
0300 S67E 300mm (11.81") Single ø3.5mm sheath IP67 male connector



0300 D67E 300mm (11.81") Double ø3.5mm sheath IP67 connector



### IP67 2 Pin Connector



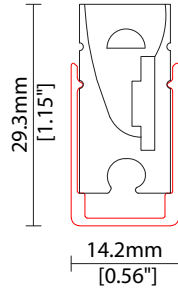
### Key

Control Gear Power supply, sub-controllers & control systems

JB Junction box / cable connection

### MOUNTING ACCESSORIES

Note: Accessories are to be ordered separately with corresponding code shown below.

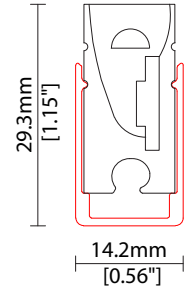
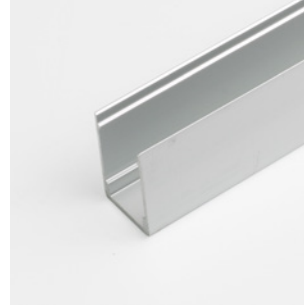


#### KKCP-18

Mounting clip  
(allow of 3 per metre/40")  
*Note: number of clips may depend on design*

Anodised aluminium finish

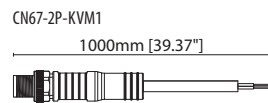
L30/W14.2/H29.3mm  
(L1.18/W0.56/H1.15")



#### KKCH-02

Mounting channel  
Anodised aluminium finish  
W14.2/H29.3mm  
(W0.56/H1.15")

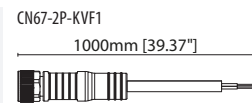
### POWER FEED



IP67

#### CN67-2P-KVM1

IP67  
2 Pin male lead connector  
1000mm (39.37in)



IP67

#### CN67-2P-KVF1

IP67  
2 Pin female lead connector  
1000mm (39.37in)

### EXTERIOR JUNCTION BOXES



#### KKJB-07

IP67 Slim J-Box  
(including type A,B,C,D bushings)



#### KKJB-07R

Potting resin for IP67 Slim J-Box

### KKDC CONTROL



IP20  
Plastic housing  
L170/W59/H29mm  
(L6.69/W2.32/H1.14in)

#### KKDM-06 1-10V

visDIM dimmable sub-controller  
(4 x 8A max @ 12-36V)



IP20  
Plastic housing  
L170/W53.4/H28mm  
(L6.69/W2.10/H1.10in)

#### KKSC-05 DMX

visDIM dimmable sub-controller  
(4 x 5A max @ 12-36V)



IP20  
Plastic housing  
L170/W59/H29mm  
(L6.69/W2.32/H1.14in)

#### KKDL-02 DALI

visDIM dimmable sub-controller  
(4 x 8A max @ 12-36V)



IP20  
Plastic housing  
L166/W53.4/H23mm  
(L6.54/W2.10/H0.91in)

#### KKDL-03 DALI

visDIM dimmable sub-controller  
(4 x 5A max @ 12-36V)



IP20  
Plastic housing  
L170/W53.4/H28mm  
(L6.69/W2.10/H1.10in)

#### KKDL-04 DALI-2

visDIM dimmable sub-controller  
(4 x 8A max @ 12-36V)

### AVAILABLE PSU OPTIONS

| Control Mode  | PSU (Order Code) | Input Voltage AC | Output Voltage DC | Rated Output Current | Rated Power | Dim %             | IP Rating |
|---------------|------------------|------------------|-------------------|----------------------|-------------|-------------------|-----------|
| Switched      | CEN-60-24        | 90-295V          | 24V               | 2.5A                 | 60W         | -                 | IP67      |
|               | HLG-60H-24       | 90-305V          | 24V               | 2.5A                 | 60W         | -                 | IP67      |
|               | HLG-100H-24      | 90-305V          | 24V               | 4.0A                 | 100W        | -                 | IP67      |
|               | HLG-150H-24      | 90-305V          | 24V               | 6.3A                 | 150W        | -                 | IP67      |
|               | HLG-240H-24      | 90-305V          | 24V               | 10A                  | 240W        | -                 | IP67      |
| 0-10V (1-10V) | PWM-40-24        | 90-305V          | 24V               | 1.67A                | 40W         | 100-0.15 (100-10) | IP67      |
|               | PWM-60-24        | 90-305V          | 24V               | 2.5A                 | 60W         | 100-0.15 (100-10) | IP67      |
|               | PWM-90-24        | 90-305V          | 24V               | 3.67A                | 90W         | 100-0.15 (100-10) | IP67      |
|               | PWM-120-24       | 90-305V          | 24V               | 5.0A                 | 120W        | 100-0.15 (100-10) | IP67      |
| DALI          | LIN100A1         | 120-277V         | 24V               | 1A per channel       | 100W        | 100-0.1           | IP66/IP40 |
| DMX RGB       | LIN100A1         | 120-277V         | 24V               | 1.33A per channel    | 100W        | 100-0.1           | IP66/IP40 |
| DMX RGBW      | LIN100A1         | 120-277A         | 24V               | 1A per channel       | 100W        | 100-0.1           | IP66/IP40 |

### Flicker Free Options - Combination of PSU+ sub-controller

| Control Mode   | PSU (Order Code) | Sub-controller (Order Code) | Input Voltage AC | Output Voltage DC | Rated Output Current | Rated Power | Dim %   | IP Rating PSU/ Sub-controller |
|----------------|------------------|-----------------------------|------------------|-------------------|----------------------|-------------|---------|-------------------------------|
| 0-10V or 1-10V | CEN-60-24        | KKDM-06                     | 90-295V          | 24V               | 2.5A                 | 60W         | 100-0.9 | IP67/IP20                     |
|                | HLG-60H-24       | KKDM-06                     | 90-295V          | 24V               | 2.5A                 | 60W         | 100-0.9 | IP67/IP20                     |
|                | HLG-100H-24      | KKDM-06                     | 90-295V          | 24V               | 4.0A                 | 100W        | 100-0.9 | IP67/IP20                     |
|                | HLG-150H-24      | KKDM-06                     | 90-295V          | 24V               | 6.3A                 | 150W        | 100-0.9 | IP67/IP20                     |
|                | HLG-240H-24      | KKDM-06                     | 90-295V          | 24V               | 10.0A                | 240W        | 100-0.9 | IP67/IP20                     |
| DALI           | CEN-60-24        | KKDL-02/03/04/visDIM PRO 30 | 90-295V          | 24V               | 2.5A                 | 60W         | 100-0.1 | IP67/IP20                     |
|                | HLG-60H-24       | KKDL-02/03/04/visDIM PRO 30 | 90-305V          | 24V               | 2.5A                 | 60W         | 100-0.1 | IP67/IP20                     |
|                | HLG-100H-24      | KKDL-02/03/04/visDIM PRO 30 | 90-305V          | 24V               | 4.0A                 | 100W        | 100-0.1 | IP67/IP20                     |
|                | HLG-150H-24      | KKDL-02/03/04/visDIM PRO 30 | 90-305V          | 24V               | 6.3A                 | 150W        | 100-0.1 | IP67/IP20                     |
|                | HLG-240H-24      | KKDL-02/03/04/visDIM PRO 30 | 90-305V          | 24V               | 10.0A                | 240W        | 100-0.1 | IP67/IP20                     |
| DMX RGB        | CEN-60-24        | KKSC-05                     | 90-295V          | 24V               | 2.5A                 | 60W         | 100-0.9 | IP67/IP20                     |
|                | HLG-60H-24       | KKSC-05                     | 90-305V          | 24V               | 2.5A                 | 60W         | 100-0.9 | IP67/IP20                     |
|                | HLG-100H-24      | KKSC-05                     | 90-305V          | 24V               | 4A                   | 100W        | 100-0.9 | IP67/IP20                     |
|                | HLG-150H-24      | KKSC-05                     | 90-305V          | 24V               | 6.3A                 | 150W        | 100-0.9 | IP67/IP20                     |
|                | HLG-240H-24      | KKSC-05                     | 90-305V          | 24V               | 10.0A                | 240W        | 100-0.9 | IP67/IP20                     |

<sup>1</sup> The items shown above cover the most frequently used specification but does not exhaust the possible options

<sup>2</sup> PSU and/or driver can be chosen from the table, or KKDC may recommend the best option upon receipt of the controls requirement and installation environment

<sup>3</sup> Electrical shop drawing will include detailed information of PSU and relevant control drivers

<sup>4</sup> Cut sheets are available on the controls section of [www.kkdc.lighting](http://www.kkdc.lighting) or upon request