

NEKKIDA

A new multisensorial lamp designed by lisa marchesi studio in collaboration with KKDC

Una lampada tutta per se

A simple, linear, almost abstract shape.

When unlit, it resembles a graphite mark on white paper, but when lit, it transforms and becomes the focal point of the space.

The design for this new floor lamp arises from the desire to go beyond, not just thinking about light, but considering this object as if it were a tool collector capable of stimulating our senses. Starting from the desire to have a highly customizable lamp, with this product it is possible to choose the type of lighting desired, but not only that. It encompasses many

functions, allowing us to act on our senses. Hence the choice of the name Nekkida, which in Korean means precisely feeling, sensation.

Multisensory, why?

Because it's the emotion of a light that envelops, that illuminates, that transforms a space; it's an element that, like a totem, captures attention, assuming a symbolic role; it's the tool that allows us to personalize our space by intervening on the stimulation of the senses.

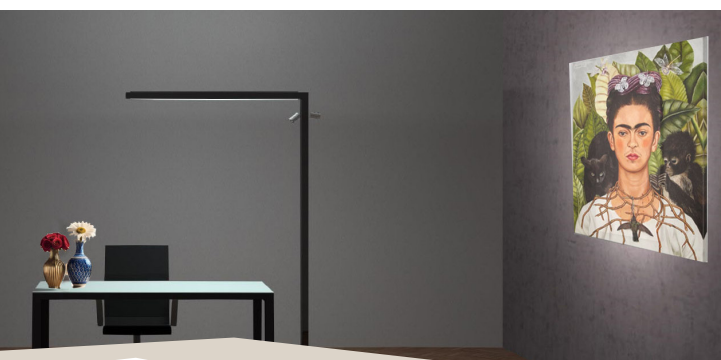
How?

With light, understood as multifunctional, we aim to stimulate the sense of sight:



through various emissions, dynamic indirect white or colored, diffused direct or dynamic white accent, and with a light management system, via the CASAMBI application, capable of managing lighting scenarios according to needs, each of us can create our own atmosphere, our "safe place".

By incorporating a fragrance diffuser, the sense of smell is stimulated.



NEKKIDA

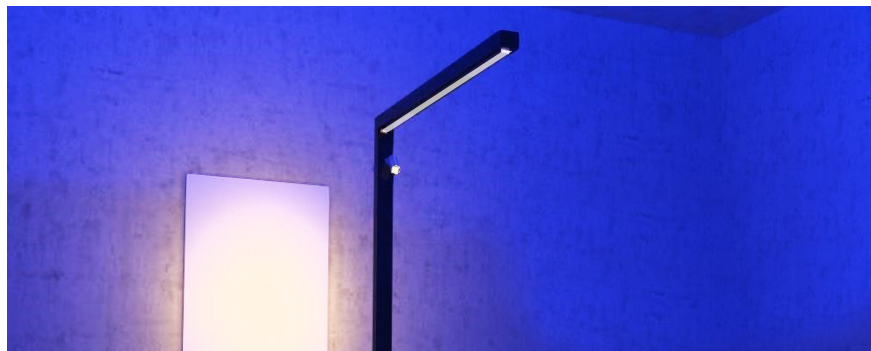
With systems capable of managing audio, understood as the ability to listen to music, to channel sound in a particular direction, we stimulate the sense of hearing.

Finally, through the use of special finishes, which can be of various types, we stimulate the sense of touch.

Nekkida is therefore a floor lamp that can serve multiple functions, thanks to the applied technologies, and the technical and aesthetic details that highly characterize its design.

The lamp is characterized by a direct diffused dynamic white light from 1900K to 5000K, and an indirect diffused dynamic white light from 1900K to 5000K and RGBW.

On the vertical element, it is possible to have up to two spotlights with medium optics and fixed color temperature, selectable at 2700K/3000K/3500K, which



allow for a more focused light, very useful, for example, for illuminating an object on a table, on the floor, or an image on the wall. Thanks to the patented technology by KKDC, and the "nano louvre" filter applied to the direct light, the lamp offers very high comfort, reducing glare. The light is highly customizable both in terms of quantity and color temperature or color, in a very simple way thanks to the CASAMBI app and a control panel placed on the vertical element for on/off switching.

Also included are a fragrance diffuser via rechargeable USB, speakers for sound diffusion, and a USB port for charging any devices.

Future developments may be directed towards innovative and ecological finishing materials, as well as the possibility of projecting videos and having a battery-operated version... but we will discover more about this soon.

Stay tuned!



NEKKIDA

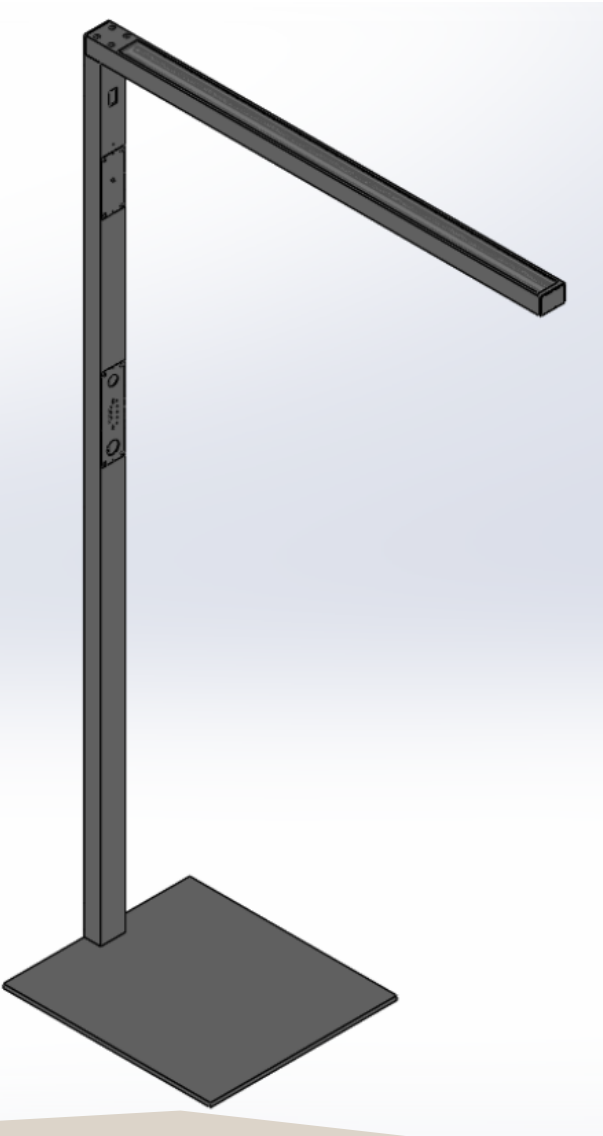
Made in Korea

- KKDC LED lighting know-how
- product development expertise



Designed in Italy

- sensorial product
- customizable lighting
- multifunctional



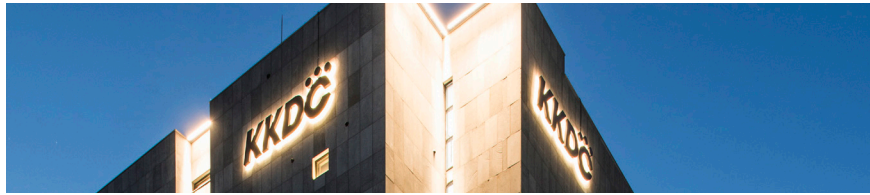
Architectural Lighting Expertise

KKDC

KKDC is an established manufacturer, designing and producing a wide range of specialist LED lighting solutions for high end architectural markets worldwide. With our R&D Centre is based in Seoul, South Korea, KKDC has always been grounded in our research and implementation of complete electronic and engineering solutions in the application of LED's produced from the best performing patented materials.

To learn more about KKDC please visit website:

<https://kkdc.lighting/it/>



lisa marchesi studio

lisa marchesi studio is an independent lighting design firm, based in Milan, that enhances the designed spaces and places with light and darkness. When designing the lighting, we have placed the human being at the center, creating luminous atmospheres that contain emotions, we have combined different techniques to preserve and emphasize any type of architecture and environment.

To learn more about lisa marchesi studio please visit website:

<https://www.lisamarchesi.com/>

CASAMBI

Casambi, a leader in modern wireless lighting control solutions based on Bluetooth Low Energy, provides solutions with excellent user experience, high performance, and scalability. These range from basic control of individual fixtures to large-scale solutions with cloud-based remote control, monitoring, and data logging

To learn more about CASAMBI please visit website:

<https://casambi.com/>

For NEKKIDA enquiries please contact: info@kkdc.it